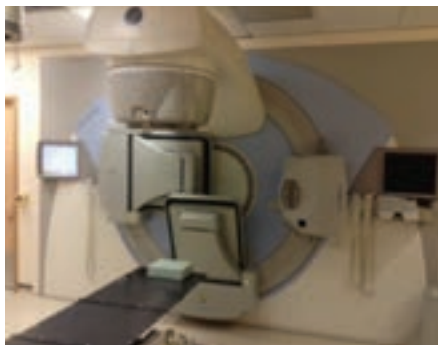


Patient Information Service

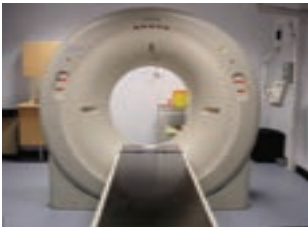
Having radiotherapy – an easy read guide



Planning your treatment



Your doctor thinks you need some radiotherapy treatment.



First you need to have a scan to plan your treatment.

This is the scanning machine.



The staff will make you comfortable.



The scan is quick.
You will not feel anything.



You will have tiny tattoo marks to help get you in the right position for the treatment.



You will be given an appointment to start your treatment.



This might be in a few weeks.

Having your radiotherapy



For your treatment, come to reception.



Wait until your name is called.



The staff will explain about your treatment.



You may need to wear a gown.



This is a treatment machine.



Staff can not stay with you but they can see you.



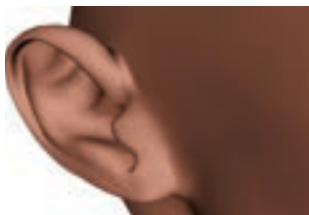
You need to keep still.



You will not feel anything.



If you need help, raise your arm.



You will hear a humming noise.



Treatment takes around 15 minutes.



After treatment, you can go home.



Wash the area gently with any soap and warm water.



Have eight to ten drinks a day.



Your skin where the treatment is might get sore.



If we treat your head, you might lose your hair.



If we treat your throat or mouth you might find it hard to eat.



If we treat your chest you might cough or find it hard to swallow.



If we treat your tummy you might feel sick.



If we treat your pelvis you might get diarrhoea.



If you have a problem, tell us, we can help you.



You are having treatments.



Phone **01702 507189.**
During treatment.



Phone **01702 385236.**
After treatment.



If you have need of more help, you can
also speak to the learning disability
nurse **01702 435555 ext 6448.**

Patient Information Service

If this leaflet does not answer all of your questions, or if you have any other concerns please contact the learning disability nurse on: **01702 435555 ext 6448**.

www.southend.nhs.uk

For a translated, large print or audio tape version of this document please contact:

Patient Advice & Liaison Service (PALS)

Southend University Hospital NHS Foundation Trust

Prittlewell Chase

Westcliff-on-Sea

Essex, SS0 0RY

Telephone: 01702 385333

Fax: 01702 508530

Email: pals@southend.nhs.uk